

TRACK TABLE		
	CLEAR LENGTH(FT)	CAPACITY @ 70' CARS
TRACK A2	700	10
TRACK B1	700	10
TRACK B2	700	10

NOTES AND LEGEND:

- ALL CURVES ARE MINIMUM CURVES OF 7.5 DEGREE OF CURVATURE (R=764.49')

- PROPOSED TRACK
- REMOVE TRACK
- EXISTING TRACK
- - - - - EXISTING RIGHT OF WAY

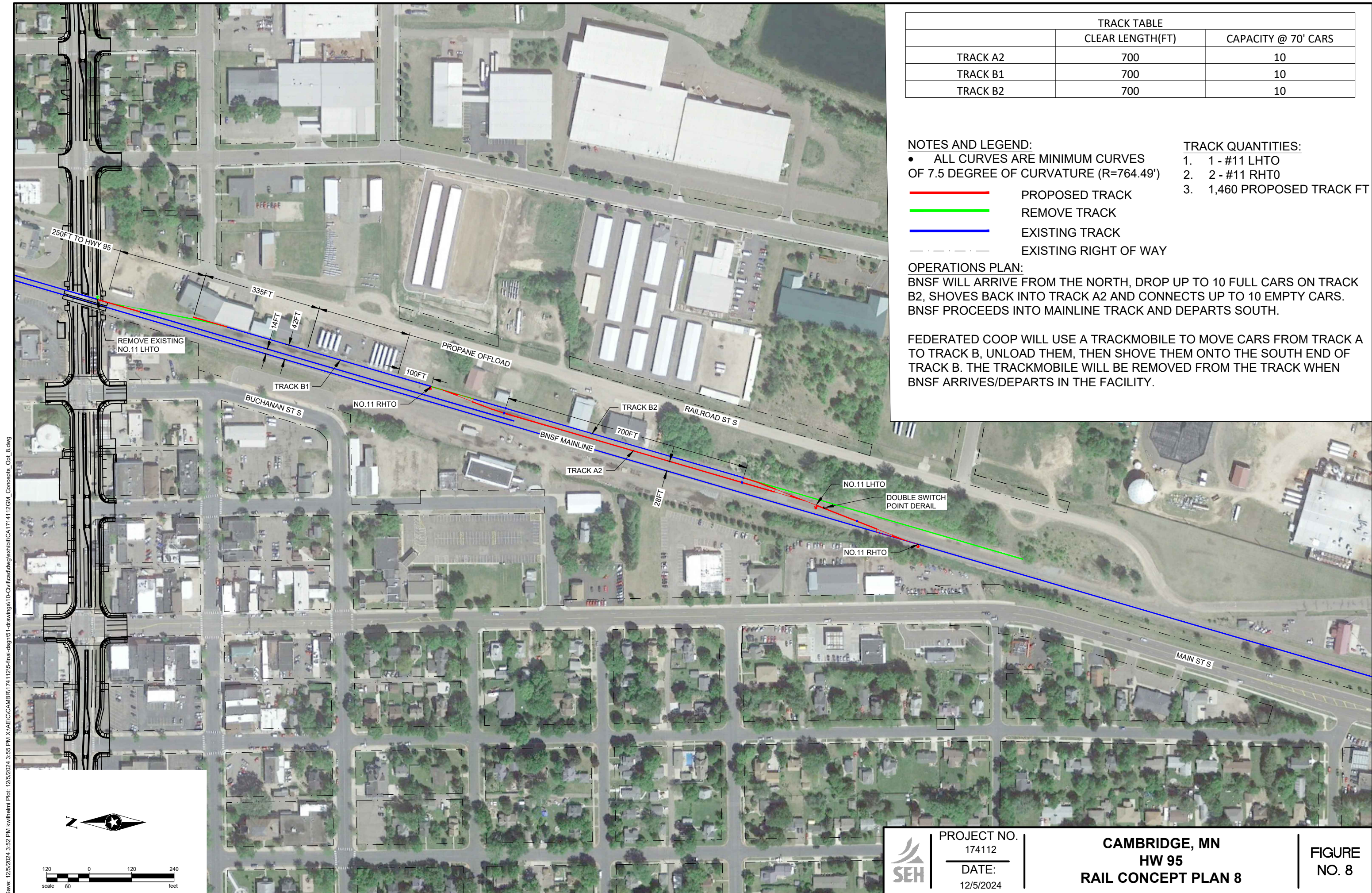
TRACK QUANTITIES:

1. 1 - #11 LHTO
2. 2 - #11 RHTO
3. 1,460 PROPOSED TRACK FT

OPERATIONS PLAN:

BNSF WILL ARRIVE FROM THE NORTH, DROP UP TO 10 FULL CARS ON TRACK B2, SHOVS BACK INTO TRACK A2 AND CONNECTS UP TO 10 EMPTY CARS. BNSF PROCEEDS INTO MAINLINE TRACK AND DEPARTS SOUTH.

FEDERATED COOP WILL USE A TRACKMOBILE TO MOVE CARS FROM TRACK A TO TRACK B, UNLOAD THEM, THEN SHOVE THEM ONTO THE SOUTH END OF TRACK B. THE TRACKMOBILE WILL BE REMOVED FROM THE TRACK WHEN BNSF ARRIVES/DEPARTS IN THE FACILITY.



Save: 12/5/2024 3:52 PM kwiilhami Plot: 12/5/2024 3:55 PM X:\AEC\CAMBR174112\5-final-dsgn\51-drawings\10-Civil\ca\dwg\exhibit\CA174112\GM_Concepts_Op_8.dwg

	PROJECT NO. 174112	CAMBRIDGE, MN HW 95 RAIL CONCEPT PLAN 8	FIGURE NO. 8
	DATE: 12/5/2024		